



**Hello! مرحبا! 안녕하세요! Привет!**

*A welcome guide for international students*

## WELCOME TO STUTTGART!



We are pleased to welcome you as our guest at the Baden-Wuerttemberg Cooperative State University Stuttgart (DHBW Stuttgart). Whether you are seeking a degree at our university or are coming for a couple of months to Stuttgart, our Welcome Guide will accompany you throughout your time at the beginning of your stay at the university and in Stuttgart itself.

The brochure is a guide on how to deal best with unavoidable administrative paperwork and it contains many useful addresses, telephone numbers and contact persons at the Baden-Wuerttemberg Cooperative State University Stuttgart and outside the university. In addition, it provides interesting tips for leisure opportunities – because Stuttgart is unique, not only as a place to study!

**We wish you an eventful stay in Stuttgart!**

International Office

# CONTENTS

---

## WELCOME TO STUTT GART!

### ASSISTANCE AND COUNSELLING

- » International Office
- » Central International Office
- » Academic Counselling

### GETTING STARTED IN STUTT GART

- » Checklist - To handle the formalities
- » **ONE** Accommodation
- » **TWO** Enrolment at DHBW Stuttgart
- » **THREE** Using the public transportation system
- » **FOUR** Residence registration / Working in Germany
- » **FIVE** Opening a bank account
- » **SIX** Health insurance
- » **SEVEN** Liability insurance
- » **EIGHT** Important formalities at the end of studies

## STUDYING AT DHBW STUTT GART

- » Made in Baden-Wuerttemberg – a success story
- » The Cooperative Degree Programme
- » Academic calendar
- » Schools and study centres
- » Internet / Email / Computer Centre
- » Libraries
- » Dining halls and cafeterias
- » Extracurricular activities
  - Extracurricular studies
  - Collegiate sports
  - Chormäleon
  - DHBW Engineering Stuttgart e. V.
  - Student Union
  - DHBW Stuttgart Alumni and Friends Association



## EVERYDAY LIFE

- » Telephone
- » Summer time
- » International Student Identity Card (ISIC)
- » Public holidays
- » Car and driving licence
- » Travelling by train
- » Travelling by bus
- » Call a bike
- » Shopping
- » Legal counselling
- » Social counselling
- » Psychological counselling
- » Medical care
- » Information for wheelchair users

## EXPERIENCE STUTT GART

- » Programme for the leisure time
- » Tourist information
- » Culture Connection at DHBW
- » Evening classes and language schools
- » Museums / Galleries
- » Opera / Ballet / Theatre / Musicals
- » Cinema, clubs & bars
- » Landmarks, gardens and walking tours
- » Stadiums and sports halls / Swimming pools and mineral water springs
- » Festivals and events in the region

## BEAUTIFUL SOUTHERN GERMANY

## IMPORTANT EMERGENCY NUMBERS

## IMPRINT

**INTERNATIONAL OFFICE**

PAULINENSTRASSE 50 / 70178 STUTT GART

**Head of the International Office**

Dorte Süchting / phone: 0711/1849-862

email: [international@dhbw-stuttgart.de](mailto:international@dhbw-stuttgart.de)

**ACADEMIC ADVISOR (SIZ)**

PAULINENSTRASSE 50 / 70178 STUTT GART

Andreas Wenseric / phone: 0711/1849-543

email: [andreas.wenseric@dhbw-stuttgart.de](mailto:andreas.wenseric@dhbw-stuttgart.de)

**OUR OFFER**

- » Support and organization of exchange students' stay in Stuttgart before their arrival and afterwards (students' dormitory, enrolment, visits to the authorities etc.)
- » Counselling with regard to visa and residence permit, health insurance, opening of a bank account etc.
- » Information on general questions regarding the studies at DHBW Stuttgart and the stay in Stuttgart
- » Information on students' leisure time activities
- » Counselling and support for international degree students

[www.dhbw-stuttgart.de/incomings](http://www.dhbw-stuttgart.de/incomings)

[www.facebook.com/aaio.dhbwstuttgart](https://www.facebook.com/aaio.dhbwstuttgart)

[www.twitter.com/DHBWStuttgartIO](https://www.twitter.com/DHBWStuttgartIO)

**CENTRAL INTERNATIONAL OFFICE  
OF BADEN-WUERTTEMBERG**

**COOPERATIVE STATE UNIVERSITY**

FRIEDRICHSTRASSE 14, 70174 STUTT GART

**Head of the Central International Office**

Prof. Dr. Axel Gerloff / phone: 0711/320660-50

email: [ias@dhbw.de](mailto:ias@dhbw.de)

**OUR OFFER**

- » The Central International Affairs Office of DHBW coordinates the international affairs of Baden-Wuerttemberg Cooperative State University (DHBW)
- » Information concerning foreign educational credentials

[www.dhbw.de/international](http://www.dhbw.de/international)



## ACADEMIC COUNSELLING

PAULINENSTRASSE 50 / 70178 STUTT GART

### General information on studies at DHBW Stuttgart

phone: 0711/1849-632

email: [info@dhbw-stuttgart.de](mailto:info@dhbw-stuttgart.de)

### Academic Counselling

Astrid Oltmann / phone: 0711/1849-744

email: [astrid.oltmann@dhbw-stuttgart.de](mailto:astrid.oltmann@dhbw-stuttgart.de)

### OUR OFFER

- » Information and counselling of future and current students on study opportunities, contents, structure and requirements of a study programme
- » Support in reaching a decision during the selection process of an adequate course
- » Support during all stages of students' studies

[www.dhbw-stuttgart.de/studienberatung](http://www.dhbw-stuttgart.de/studienberatung)



8 GETTING STARTED IN STUTTGART



### CHECKLIST – TO HANDLE THE FORMALITIES

The first steps at the beginning of your stay in a foreign country are often not easy. Many formalities have to be dealt with, many forms have to be filled in in a foreign language. Our checklist will help you to orientate better.

- » **ONE** Accommodation
- » **TWO** Enrolment at DHBW Stuttgart
- » **THREE** Using the public transportation system
- » **FOUR** Residence registration / Working in Germany
- » **FIVE** Opening a bank account
- » **SIX** Health insurance
- » **SEVEN** Liability insurance
- » **EIGHT** Important formalities at the end of studies

ONE  
TWO  
THREE  
FOUR  
FIVE  
SIX  
SEVEN  
EIGHT



## ONE ACCOMMODATION

---

### STUDENT DORMITORY

In case you have been assigned a room in a student dormitory there are some formalities to comply with:

- » **You must pay a deposit to the Studierendenwerk** (Student Services) before you move into your dormitory room. Usually it is EUR 700.00 including EUR 300.00 as a partial payment of your first month's rent. Please see the contract from Studierendenwerk in order to get the information on the bank details and the amount of money to be transferred.
- » Please keep the receipt of the deposit payment in a safe place as you will need to present it later in order to receive the key to your room and at the end of your studies in order to get a refund. The deposit will be returned to you when you move out, providing you left the room in an orderly manner (see "Refund of the room deposit" in the section "Important formalities at the end of studies").
- » In case you authorize someone else to pick up your room key, the deposit still must be paid in advance and your representative has to show the receipt to the house keeper (a faxed or scanned copy will be accepted as well in case there is no original form available). The representative will also need either a copy of your letter from the Studierendenwerk or an authorization letter or email from you or your institute in order to receive the key.

- » **Present the SEPA direct debit to the house keeper in order to receive your key.** You will have to sign the tenancy agreement in the house keeper's office and you will be asked by the house keeper to provide him with your bank details (Einzugsermächtigung) as soon as possible so the monthly rent can be debited automatically to your account.
- » You will also be asked by the house keeper to fill in a registration form (Erfassungsblatt) and to hand in a copy of your passport, residence permit (as soon as you have it) and a passport photograph.

---

**Exchange students can purchase bed linen and coverlets from the house keeper for a small fee.**

**Rent varies between EUR 250.00 and EUR 400.00 per month.**

**In all student dormitories you can only move in and out from Monday to Friday during the office hours of the house keeper.**

---

### Studierendenwerk Stuttgart

Housing Department

Rosenbergstrasse 18 / 70174 Stuttgart

phone: 0711/9574 410

email: [wohnen@sw-stuttgart.de](mailto:wohnen@sw-stuttgart.de)

[www.studierendenwerk-stuttgart.de/wohnen](http://www.studierendenwerk-stuttgart.de/wohnen)

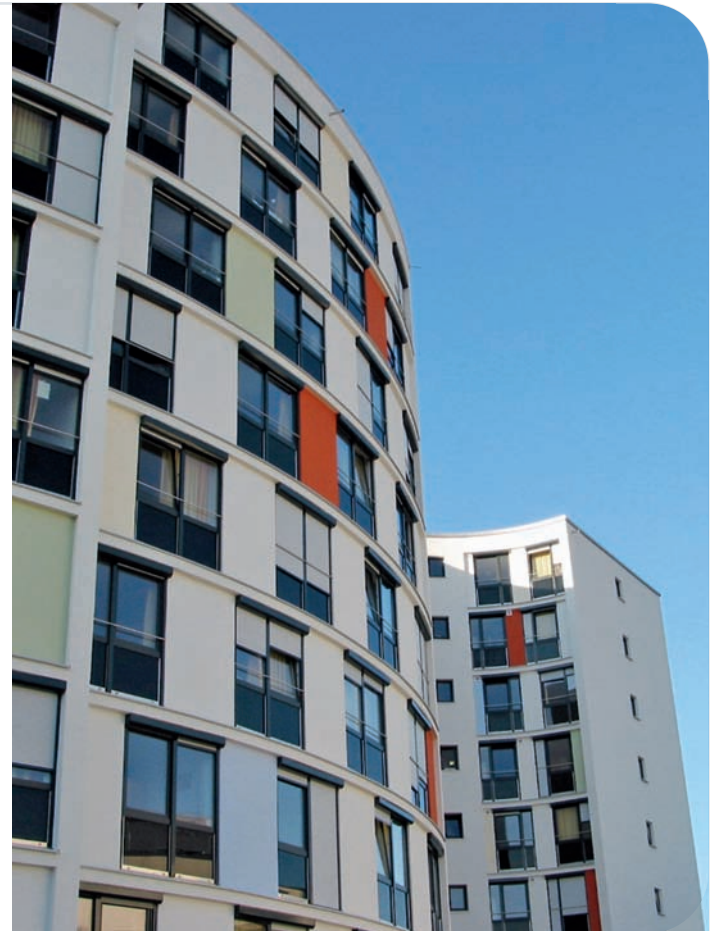
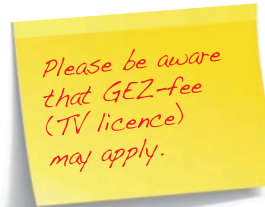
## INTERNET ACCESS

There is internet access for students in their room in each dormitory. The costs for using the internet are usually included in the rent, except for some dormitories, where students have to pay a small membership fee (there are no extra fees for the internet access).

**The student union SELFNET provides internet connection at the following dormitories:**

- » Anna-Herriegel-Haus (Wildbader Straße 16)
- » Allmandring I to III
- » Bauhäussle
- » Birkenwaldstraße 91
- » Filderbahnplatz 33-35
- » Heilmannstraße 4a/b
- » Heilmannstraße 3-7
- » Kernerstraße 2
- » Landhausstraße 14
- » Max-Kade-Haus (Holzgartenstraße 9A)
- » Neckarstraße 132
- » Pfaffenhof I and II
- » Rieckestraße 17
- » Rosensteinstraße 1-5
- » Straussäcker I to III
- » Theodor-Heuss-Heim (Rosenbergstraße 68)
- » Wohngruppen Neckarstraße 172 (Boardinghaus Stuttgart)

[www.selfnet.de](http://www.selfnet.de)



## YOUTH HOSTELS IN STUTTGART

### Jugendherberge Stuttgart International

Hausmannstrasse 27 / phone: 0711/664 74 70

email: [info@jugendherberge-stuttgart.de](mailto:info@jugendherberge-stuttgart.de)

[www.jugendherberge-stuttgart.de](http://www.jugendherberge-stuttgart.de)

### Jugendgästehaus Stuttgart

Richard-Wagner-Strasse 2 / phone: 0711/24 11 32

email: [jgh-stuttgart@internationaler-bund.de](mailto:jgh-stuttgart@internationaler-bund.de)

[www.hostel-stuttgart.de](http://www.hostel-stuttgart.de)

### ALEX 30 Hostel

Alexanderstrasse 30 / phone: 0711/838 89 50

email: [info@alex30-hostel.de](mailto:info@alex30-hostel.de)

[www.alex30-hostel.de](http://www.alex30-hostel.de)

### Jugendherberge Stuttgart Neckarpark

Elwertstrasse 2 / phone: 0711/664 74 70

email: [info@jugendherberge-stuttgart-neckarpark.de](mailto:info@jugendherberge-stuttgart-neckarpark.de)

[www.jugendherberge-stuttgart-neckarpark.de](http://www.jugendherberge-stuttgart-neckarpark.de)

## INTERNATIONALES STUDENTENHOTEL

### Internationales Studentenhotel

Neckarstrasse 172 / phone: 0711/41 43 00

email: [studi-hotel@sw-stuttgart.de](mailto:studi-hotel@sw-stuttgart.de)

[www.studierendenwerk-stuttgart.de](http://www.studierendenwerk-stuttgart.de)

## ROOMMATE / FLATMATE DATABASE

Several roommate/flatmate database companies in Stuttgart (Mitwohnzentrale/Zimmervermittlung) provide a room finding service on payment of a small fee of about 20% of one month's rent. Rooms in a shared flat can be rented for a day or up to a full year.

### HC24 Stuttgart

Vogelsangstrasse 23 / phone: 0711/19445

email: [stuttgart@hc24.de](mailto:stuttgart@hc24.de)

[www.hc24.de](http://www.hc24.de)

### Night & Day

Besmerstrasse 29 / CH-8280 Kreuzlingen

phone: 0049 211 43 691 153

[www.nd-bed-breakfast.de](http://www.nd-bed-breakfast.de)

## SEARCH ONLINE FOR A ROOM

Students can also search online for a room:

[www.studenten-wg.de](http://www.studenten-wg.de)  
[www.studentenwohnungsboerse.de](http://www.studentenwohnungsboerse.de)  
[www.die-wg-boerse.de](http://www.die-wg-boerse.de)  
[www.studentenwohnungsmarkt.de](http://www.studentenwohnungsmarkt.de)  
[www.wg-gesucht.de](http://www.wg-gesucht.de)  
[www.zimmersucher.de](http://www.zimmersucher.de)  
[www.wg-welt.de](http://www.wg-welt.de)  
[www.dreamflat.com](http://www.dreamflat.com)

## MOVING INTO A NEW FLAT

---

Every time you move within Germany you have to notify the change of address to the residents' registration office (Bürgerbüro). This also applies when moving within the same city or the same student dormitory. The form for the residence registration should be handed in by the end of the first week after moving in.

---



## TWO ENROLMENT AT DHBW STUTTGART

---

### ENROLMENT

Degree students will be enrolled by the secretariats of the specific study programme. Please note that you may only be enrolled at DHBW Stuttgart if you have concluded a study contract with a partner company. Visiting exchange students should contact the International Office.

### FEES

The following fees are mandatory:

- » Student Services fee
- » Administration fee  
(not relevant for exchange students)
- » Student body contribution  
(not relevant for exchange students)
- » Social insurance contribution covered by the partner company  
(not relevant for exchange students)

**Disabled students** who are eligible for free use of public transport because of their disability will be refunded the contribution fee to the financing of VVS StudiTickets upon application and upon presentation of a disabled ID card. The refund request must be submitted and handed in to the Studierendenwerk Stuttgart by the end of the semester.

phone: 0711/1849-711

email: [gebuehren@dhbw-stuttgart.de](mailto:gebuehren@dhbw-stuttgart.de)

[www.dhbw-stuttgart.de/gebuehren](http://www.dhbw-stuttgart.de/gebuehren)

### STUDENT ID CARD

Once enrolled, students receive a multi-functional student ID in the form of a plastic card with photo. The card must be activated at the validation machines:

- » Herdweg 23 / house keeper's office
- » Jaegerstrasse 56 / cybercafé room 0.10
- » Rotebuehlplatz 41 / entrance hall
- » Theodor-Heuss-Strasse 2 / copy point
- » Rotebuehlstrasse 131, copy point (ground floor)

#### What you can do with your Student ID card:

- » Copy card
- » Library card
- » Charge card at the dining halls and cafeterias operated by the Studierendenwerk Stuttgart
- » Credentials for the purchase of the VVS monthly tickets and VVS StudiTickets
- » Use washing machines in student dormitories

---

**In case of loss or damage of your student card a new card can be obtained from the computer centre.**

**For this you will be charged a fee of EUR 18.00**

[www.dhbw-stuttgart.de/rechenzentrum](http://www.dhbw-stuttgart.de/rechenzentrum)

---





## THREE USING THE PUBLIC TRANSPORTATION SYSTEM

---

### S-BAHN / U-BAHN / BUS

There is a very good public transportation system in Stuttgart, which is organised by the Stuttgarter Straßenbahnen AG (SSB) and Verkehrsverbund Stuttgart (VVS). You can travel by train (S-Bahn), underground train (U-Bahn) or bus.

### ZONES

There are several tariff zones in the greater Stuttgart area. When purchasing a ticket you should pay attention that it is valid for the zones you are travelling through.

### TRAVEL PASS

If you intend to buy a weekly, monthly or a semester ticket you should order a travel pass (Verbundpass). The validity of the pass depends on the zones listed. The order form for the travel pass can be collected at one of the sale points of the SSB or the VVS (at the Central Station as well at the stations: Stadtmitte, Charlottenplatz, Degerloch) or on the internet. The form and a photo (and occasionally the student ID card) have to be shown at the sale points of SSB or VVS.

### TRAVELLING WITH THE STUDENT ID CARD

The student ID card (with the VVS symbol) entitles you to use it as a travelling card within the VVS-network from Monday to Friday after 6 p.m., on weekends and public holidays the whole day long.

### MONTHLY TICKETS FOR STUDENTS

This ticket is valid for the period of one month starting on the 1<sup>st</sup> day of a month. The ticket will only be valid for the zones listed in the travel pass.

### SEMESTER TICKET FOR STUDENTS "STUDITICKET"

With the StudiTicket you can travel without any time restriction on all buses and trains in the VVS-network (2<sup>nd</sup> class) during the whole semester.

### PUBLIC TRANSPORTATION DURING THE NIGHT

On the weekends and on public holidays there are night trains (S-Bahn) and night busses in Stuttgart and in the region. For more information please visit the website:

[www.nachtaktiv.net](http://www.nachtaktiv.net)

### FURTHER INFORMATION

For further information on the time schedule, the network and the ticket prices please contact the sale points of SSB or VVS at the main train station Hauptbahnhof or at the stations Stadtmitte, Charlottenplatz, Degerloch or on the internet.

#### Verkehrs- und Tarifverbund Stuttgart (VVS)

Rotebuehlstrasse 121 / 70178 Stuttgart

phone: 0711/19449

[www.vvs.de](http://www.vvs.de)



## FOUR RESIDENCE REGISTRATION / WORKING IN GERMANY

---

### RESIDENCE REGISTRATION

All international students are required to register at the resident's registration office (Bürgerbüro) after their arrival in Stuttgart (please find the address below).

The following documents must be provided:

- » Passport or ID card
- » Registration form (Anmeldung), filled in and signed
- » Einzugsschreiben

---

#### Amt für Öffentliche Ordnung

Office of public order

#### Bürgerbüro Mitte

#### Ausländerbehörde

Eberhardstrasse 39 / 70173 Stuttgart

phone: +49 711 216-91992

**Biometrical photos are photos created with special requirements and must be taken by a photographer. EU citizens do not need biometrical photos.**

**When you want to leave Germany temporarily, you must ensure the validity of your passport and the visa in order to reenter the country.**

---

### RESIDENCE PERMIT

#### EU citizens

EU citizens do not need to apply for a residence permit.

#### Non-EU citizens who do not require an entrance visa and citizens from Non-EU countries with a special agreement

Citizens from Australia, Israel, Canada, Japan, Republic of Korea, New Zealand or the USA can enter Germany without a visa. This also applies to such countries as Andorra, Honduras, Monaco and San Marino. After their arrival in Stuttgart, citizens of these countries have to go to the residents' registration office (Bürgerbüro) in order to register and then they have to apply for a residence permit (Aufenthaltserlaubnis) at the office of public order (Ausländerbehörde).

The following documents must be provided:

- » Passport
- » Registration form (Anmeldung), filled in and signed
- » Letter of admission (Zulassungsbescheid der DHBW Stuttgart)
- » 1 biometrical photo
- » Health insurance certificate (Krankenversicherungsnachweis)
- » Proof of sufficient funds (ca. EUR 720.00 per month) on a German bank account or a letter of award from a scholarship organization
- » appr. EUR 60.00 handling charge

*www.anerkennung-in-deutschland.de  
www.make-it-in-germany.com*

### Non-EU citizens who require an entrance visa

Students from countries of which an entrance visa is required must have a student applicant visa or a student visa issued by the German embassy in their home country. After their arrival in Stuttgart they have to go to the residents' registration office (Bürgerbüro) in order to register\*. They have to apply for a residence permit (Aufenthaltserlaubnis) at the office of public order (Amt für Öffentliche Ordnung) only if they need to extend their visa.

The following documents must then be provided:

- » Passport
- » Registration form (Anmeldung), filled in and signed
- » Certificate of enrolment
- » 1 biometrical photo
- » Health insurance certificate (Krankenversicherungsnachweis)
- » Proof of sufficient funds (ca. EUR 720.00 per month) on a German bank account or a letter of award from a scholarship organization
- » appr. EUR 60.00 handling charge

\* see left page  
RESIDENCE REGISTRATION

*Some open questions about living and working in Stuttgart and in the region? The Welcome Service Region Stuttgart (WSRS) will support you!  
[www.welcome.region-stuttgart.de](http://www.welcome.region-stuttgart.de)*

### WORK PERMIT

EU citizens do not need a work permit in order to be employed in Germany. Please note that there are temporary regulations for the new EU countries.

Students of all other countries must have an additional annexe in their passport (please make sure that it is approved explicitly in your passport while applying for the residence permit): "Beschäftigung bis zu 120 Tagen oder 240 halben Tagen im Jahr sowie Ausübung studentischer Nebentätigkeiten und studienintegrierte Praktika nach § 2 BeschV erlaubt".

For a successful job application students will also need a valid social security number ([www.deutsche-rentenversicherung.de](http://www.deutsche-rentenversicherung.de)) and a tax identification number ([www.fa-stuttgart.de](http://www.fa-stuttgart.de)).

---

**International degree students do not need to apply for a work permit in order to be accepted at DHBW Stuttgart. The practical training periods form a part of the cooperative study programme.**

---

**Degree students are not allowed to work during the study period at DHBW Stuttgart.**

---

**Agentur für Arbeit**  
Nordbahnhofstrasse 30 - 34  
70191 Stuttgart  
[www.arbeitsagentur.de](http://www.arbeitsagentur.de)



## FIVE OPENING A BANK ACCOUNT

To participate in the cash-free transfer of money in Germany in order to pay for your rent, health insurance, tuition and similar things you must have a bank giro account (Girokonto).

When opening a bank account you can order a bank card with which you can withdraw money 24/7 free of charge at any ATM of your bank. After opening an account you need to fill in the debit authorization (Einzugsermächtigung) at the house keeper's office in order to pay cash-free for the rent (see section Accommodation).

To open a bank account you will need:

- » Your passport and the residence permit (Aufenthaltserlaubnis)
- » Letter of admission (Zulassungsbescheid der DHBW Stuttgart)
- » Your address in Germany

## SIX HEALTH INSURANCE

**All students who are under 30 years old are required by German law to prove their medical insurance when enrolling at the university and at the city's authorities.**

### Health insurance for citizens from non-EU countries

Non-EU students who are under 30 years old have to purchase a student health insurance at a local German health insurance company. This insurance usually costs about EUR 80.00 per month and covers most costs for medical treatment by a doctor, dentist or in a hospital. It is mandatory to procure such an insurance.

### Travel insurance

Students are responsible for insurance coverage from the day of their departure from home until the beginning of the semester. Students should check with their insurance company at home or consider registering for travel insurance.

### Health insurance for EU citizens

As an EU citizen you need the European Health Insurance Card (EHIC) from your insurance company in your home country. Take this card to an official health insurance company in Germany (e.g. AOK) and have them exempt you from the compulsory health insurance obligation. You will receive the medically necessary treatment at a doctor, dentist or in hospital with your EHIC.

» AOK Service point | Universität Stuttgart  
Pfaffenwaldring 45 | 70569 Stuttgart  
phone: 0711 656-91532  
email: [andreas.koehn@bw.aok.de](mailto:andreas.koehn@bw.aok.de)

» Techniker Krankenkasse | Jessica Maurer  
Lautenschlagerstraße 22 | 70173 Stuttgart  
phone: 040 4606-5106609 | 0175 7225143  
email: [jessica.maurer@tk.de](mailto:jessica.maurer@tk.de)

Take with you:

- » Letter of admission (Zulassungsbescheid der DHBW Stuttgart)
- » Passport
- » European Health Insurance Card (EU citizens only)

---


**If you plan to travel outside Germany it is recommended that you get information about the payments in case of an illness in the specific country and to take out a travel health insurance.**

---



## SEVEN LIABILITY INSURANCE

A private liability insurance is not mandatory, however, we recommend to effect one as everyone takes responsibility for a material or personal damage caused by oneself with his/her whole asset. The amount for a private liability insurance can vary between EUR 50.00 to 70.00 per year. You can find databases comparing current rates on the internet: [www.degenia.de](http://www.degenia.de) / [www.check24.de](http://www.check24.de) / [www.geld.de](http://www.geld.de)



*Erasmus+ students should check the requirements for insurance*

## EIGHT IMPORTANT FORMALITIES AT THE END OF

### EXMATRICULATION

At the end of your studies your registration as a student at DHBW Stuttgart ends. Please contact the responsible secretariat for further information. Degree students can find the information on the requirements for the successful passing of an assessment in the examination regulations. Visiting exchange students are asked to contact the International Office.

### MOVING OUT OF THE STUDENT DORMITORY

When moving out of the student dormitory pay attention to the following:

#### Refund of the room deposit

When you move out of the student dormitory you will be returned your deposit of EUR 400.00 by the Studierendenwerk. You will be given a kind of statement (Laufzettel) from a house keeper, provided that your room has been left in an orderly manner. The money will be transferred to your account. It is also possible to transfer money to a third party. In case you have already cancelled your bank account in Germany before moving out of your room, you can pick up your room deposit at the office of Studierendenwerk in Stuttgart in cash. Make sure to take the Laufzettel with you and pay attention to the office's opening hours. Please call the Studierendenwerk in advance in order to make an appointment. Phone: 0711/957 44 70

## THE STUDIES

### **labelling Cancellling of your tenancy agreement ahead of schedule**

If you want to move out earlier than you had planned, you have to submit your cancellation to the Studierendenwerk at least 2 months before the intended moving out date. The Studierendenwerk decides about your cancellation. In case you don't cancel in due time you will be charged for the full duration of your lease.

### **CANCELLING THE REGISTRATION AT THE BÜRGERBÜRO**

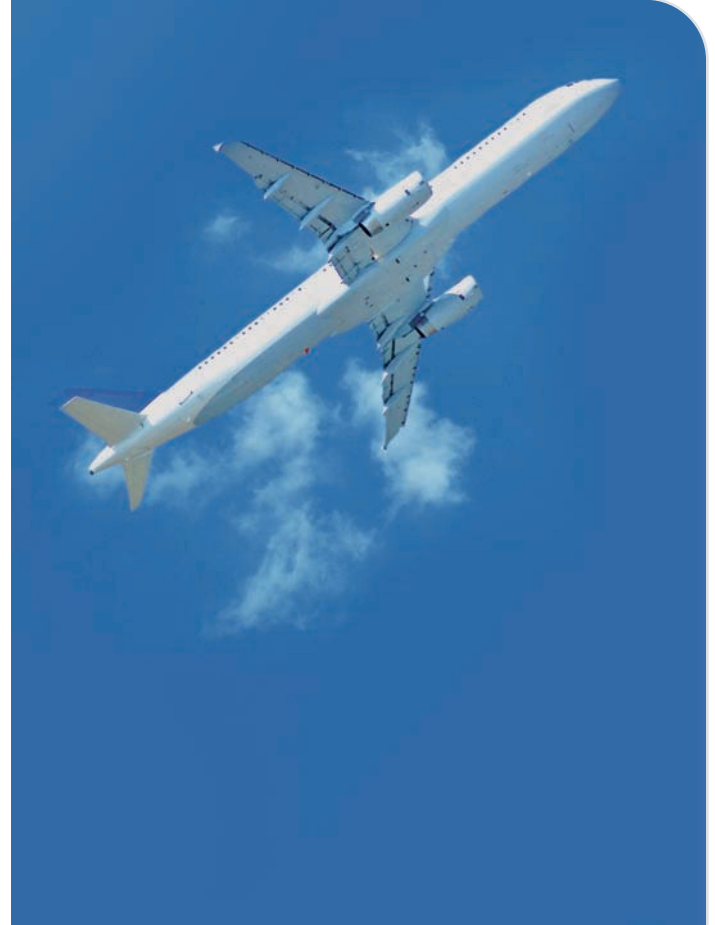
Before you leave Stuttgart you have to cancel your registration at the Bürgerbüro. Therefore please fill in the appropriate form "Abmeldung" (you will receive it at the Bürgerbüro or at the International Office) and send a copy of the confirmation of de-registration to the International Office.

### **CANCELLING OF HEALTH INSURANCE**

As a rule, it is only possible to cancel your health insurance at the end of a semester. For this you will need to submit the ex-matriculation form and a copy of your "Abmeldung" (cancelling of your registration at the Bürgerbüro) with an accompanying letter (please indicate your full name and your date of birth) to your health insurance company.

### **CLOSING YOUR BANK ACCOUNT**

Before leaving Stuttgart you should close your bank account. Please go to your bank in person and give back your cards. In exceptional cases (e.g. if you are still waiting for money to be transferred to your account) the account can also be closed online. For more information please ask your bank.



## STUDYING AT DHBW STUTTART





### **MADE IN BADEN-WUERTTEMBERG – A SUCCESS STORY**

In the early 1970s, the companies Daimler-Benz, Bosch and SEL initiated the so-called "Stuttgart Model" as a forerunner of the Berufsakademie which started off in 1974 with 122 students in 35 companies.

After 40 successful years, the government of Baden-Wuerttemberg rewarded the excellent development of the Berufsakademie and established the Duale Hochschule Baden-Wuerttemberg (Baden-Wuerttemberg Cooperative State University) on 1 March 2009.

Today the Stuttgart location with its Campus Horb is one of the largest universities in the region: round about 8,800 students complete the practical part of their studies in 2,500 first-class companies in Germany and abroad, including numerous market leaders. Diverse courses of studies are offered in the Business School, School of Engineering and School of Social Work.

### **THE COOPERATIVE DEGREE PROGRAMME**

The cooperative degree programme offers a unique combination of theory and practice. The students alternate every three months between the scientific study at the university and the practical experience at the company. Theory and practice contents are closely matched and integrate current developments in the economy, society and technology into the curriculum.

Since autumn 2011, the Baden-Wuerttemberg Cooperative State University Stuttgart has been offering dual Master's degrees in

all faculties, thereby enabling cooperative career development beyond the Bachelor degree.

### **Benefits of cooperative studies**

- » Financial independence
- » Varied and intensive studies of short duration
- » Highly-qualified lecturers
- » National and international recognition
- » International experience and orientation
- » Excellent job and promotion prospects

### **ACADEMIC CALENDAR**

Theory and practice alternate, each lasting about 12 weeks, i.e. half of the semester you spend as a **degree student** at the university, the other half at your social or corporate training facility. For the first-year students the course begins every year on 1 October.

Information for exchange and study abroad students on the programmes is available at [www.dhbw-stuttgart.de/incomings](http://www.dhbw-stuttgart.de/incomings)

## SCHOOLS AND STUDY CENTRES

### **BUSINESS SCHOOL**

HERDWEG 18 / 70174 STUTT GART

**Prof. Dr. Bernd Müllerschön**

Vice President and Dean

Contact: Roswitha Hausser

phone: 0711/1849-572

email: [roswitha.hausser@dhbw-stuttgart.de](mailto:roswitha.hausser@dhbw-stuttgart.de)



### **SCHOOL OF ENGINEERING**

JAEGERSTRASSE 53 / 70174 STUTT GART,

**Prof. Dr. Katja Kuhn**

Vice President and Dean

phone: 0711/1849-610

[www.dhbw-stuttgart.de/technik](http://www.dhbw-stuttgart.de/technik)

FLORIANSTRASSE 15, 72160 Horb am Neckar

**Prof. Dr. Hartmuth Diery**

Vice President Campus Horb

Contact: Andrea Rohrer

phone: 07451/521-123

email: [a.rohrer@hb.dhbw-stuttgart.de](mailto:a.rohrer@hb.dhbw-stuttgart.de)

<http://www.dhbw-stuttgart.de/horb>



### SCHOOL OF SOCIAL WORK

ROTEBUEHLSTRASSE 131 / 70197 STUTTGART

#### Prof. Dr. Stefan Krause

Dean of the School of Social Work

Contact: Margit Kocksch

phone: 0711/1849-721

email: [margit.kocksch@dhbw-stuttgart.de](mailto:margit.kocksch@dhbw-stuttgart.de)

[www.dhbw-stuttgart.de/sozialwesen](http://www.dhbw-stuttgart.de/sozialwesen)

### INTERNATIONAL OFFICE

#### OF THE SCHOOL OF SOCIAL WORK (ZIK)

ROTEBUEHLSTRASSE 131 / 70197 STUTTGART

Contact: Doris Kupferschmidt

phone: 0711/1849-742

email: [doris.kupferschmidt@dhbw-stuttgart.de](mailto:doris.kupferschmidt@dhbw-stuttgart.de)

[www.dhbw-stuttgart.de/zik](http://www.dhbw-stuttgart.de/zik)



### STUDY CENTRES

Paulinenstrasse 50

International Office

Student Advisory Services

Herdweg 18

Business School / KOMMUNITY

Herdweg 20

Business School

Herdweg 21

Business School

Herdweg 23

Business School

Herdweg 29-31

School of Engineering /

Business School

Jaegerstrasse 40

Business School

Jaegerstrasse 53

School of Engineering

Jaegerstrasse 56

School of Engineering /

President's Office / Administration

Public Relations

Jaegerstrasse 58

School of Engineering /

Auditorium Maximum

Kronenstrasse 39-41

School of Engineering

Kronenstrasse 40

School of Engineering

Kronenstrasse 53 A + B

School of Engineering / Library

Paulinenstrasse 50

Business School

Rotebuehlplatz 41

Business School /

School of Engineering

Rotebuehlstrasse 131

Business School /

School of Social Work

Theodor-Heuss-Strasse 2

Business School

Tuebinger Strasse 33

Business School

Horb, Florianstrasse 15

School of Engineering

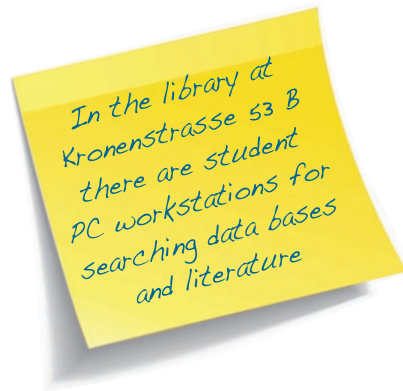
## INTERNET / EMAIL / COMPUTER CENTRE

### INTERNET / EMAIL / COMPUTER CENTRE

ROTEBUEHLPLATZ 41 / 70178 STUTTART

Students receive their credentials to the computer network, an email address at DHBW Stuttgart and a student ID card from the computer centre. On the internet pages of the computer centre students can find the information where to copy and print at DHBW Stuttgart and where to find the computer rooms. Students even are supplied with a wireless / VPN access and a software programme from the computer centre.

[www.dhbw-stuttgart.de/rechenzentrum](http://www.dhbw-stuttgart.de/rechenzentrum)



*E-learning*

[www.dhbw-stuttgart.de/e-learning](http://www.dhbw-stuttgart.de/e-learning)

You will find more information on the current computer rooms and cyber cafés online at:

[www.dhbw-stuttgart.de/rechenzentrum](http://www.dhbw-stuttgart.de/rechenzentrum)

- » **Herdweg 18** ground floor
- » **Herdweg 23** rooms U115 / U116 / U108
- » **Jaegerstrasse 56** Cyber café room 010
- » **Jaegerstrasse 58** Cyber café on the ground floor close to the copy point / room 202
- » **Kronenstrasse 39/41** 2nd floor
- » **Kronenstrasse 40** 3rd floor
- » **Kronenstrasse 53A/B** Library
- » **Rotebuehlplatz 41/1** rooms 312 / 326 / 112 / 119 / U119 / U211 / cyber café room 124
- » **Rotebuehlstrasse 131** room 320 / cyber café in the library on the ground floor
- » **Theodor-Heuss-Strasse 2** Cyber café on the 1st floor





## LIBRARIES

### **DHBW STUTTGART LIBRARY**

KRONENSTRASSE 53 B, 1<sup>ST</sup> FLOOR / 70174 STUTTGART

Students benefit from the comprehensive services of the DHBW Stuttgart library. The readers can choose from 50,000 printed books, 230 printed magazines and 14,000 e-books. The library offers full-text databases on journals in German and English.

phone: 0711/1849-835

email: [biblio@dhw-stuttgart.de](mailto:biblio@dhw-stuttgart.de)

[www.dhw-stuttgart.de/bibliothek](http://www.dhw-stuttgart.de/bibliothek)

### **PUBLIC LIBRARIES**

**City library at the Mailaender Platz**

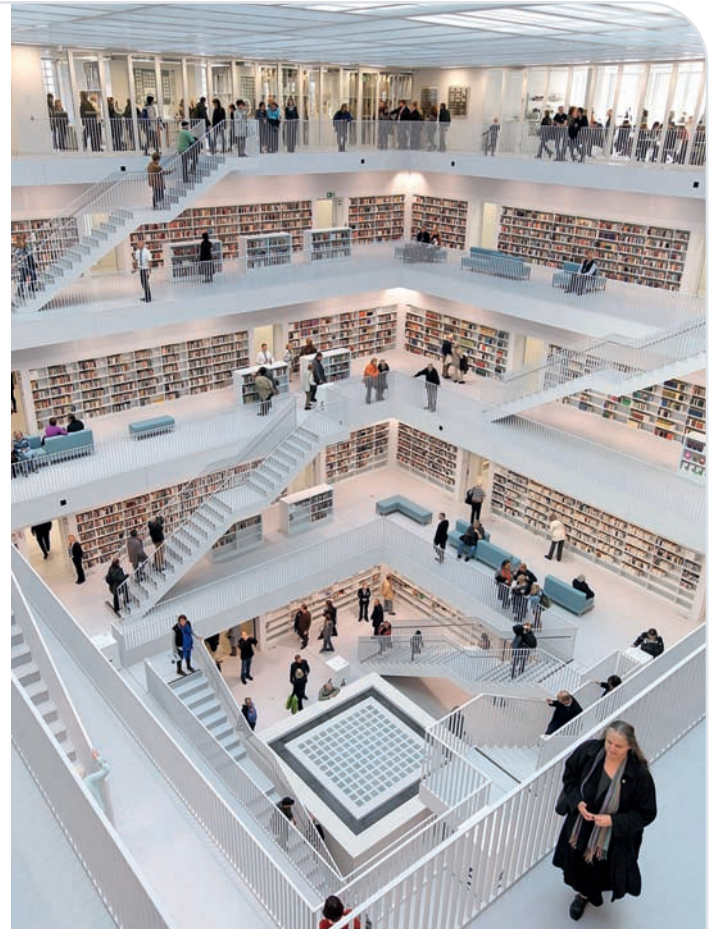
[www1.stuttgart.de/stadtbibliothek](http://www1.stuttgart.de/stadtbibliothek)

**Library of the University of Stuttgart**

[www.ub.uni-stuttgart.de](http://www.ub.uni-stuttgart.de)

**Württembergische Landesbibliothek**

[www.wlb-stuttgart.de](http://www.wlb-stuttgart.de)





## DINING HALLS AND CAFETERIAS

**Kiosk VITAPLUS**  
Kronenstrasse 45

**Cafeteria DHBW Stuttgart**  
Rotebuehlplatz 41/1

**Mensa Holzgartenstrasse**  
Holzgartenstrasse 11

**Cafeteria K1 and K2**  
Keplerstrasse 11 and 17

**Cafeteria Hochschule für Technik**  
Schellingstrasse 24

The Studierendenwerk operates several cafeterias on the various university campuses. Usually, the cafeterias are open between 8.30 a.m. and 4.30 p.m., the dining halls only between 11.15 a.m. and 2.15 p.m. Every day, students and employees can choose between various low-cost menus.

[www.studierendenwerk-stuttgart.de/gastronomie](http://www.studierendenwerk-stuttgart.de/gastronomie)

*Good value eating in Stuttgart*  
Typical Swabian dishes are:  
Maultaschen (stuffed dumplings),  
Linsen mit Spätzle (lentils with regional pasta),  
Käsespätzle (regional pasta with cheese).  
A lot of snack bars offer good value international snacks to take away.  
[www.tipsntrips.de](http://www.tipsntrips.de)



## EXTRACURRICULAR ACTIVITIES

### EXTRACURRICULAR STUDIES

JAEGERSTRASSE 56 / 70174 STUTT GART

#### Extracurricular Studies (Studium Generale)

email: [studiumgenerale@dhbw-stuttgart.de](mailto:studiumgenerale@dhbw-stuttgart.de)

#### Coordination Language-Software

email: [sprachenlernangebote@dhbw-stuttgart.de](mailto:sprachenlernangebote@dhbw-stuttgart.de)



The Studium Generale offers an interdisciplinary range of facultative courses, lectures and cultural events at DHBW Stuttgart. These courses will give students the opportunity to get more specialist knowledge, skills and qualifications in addition to the curriculum courses.

In an international and globalized world of work languages provide the basis for career success. In the language courses of the Extracurricular Studies (Studium Generale), students can brush up and strengthen their language skills or learn new languages. In addition, all students of DHBW Stuttgart can use a free online language learning software offered by Rosetta Stone, which can be used more independently in relation to time and space. Besides German, English, French and Spanish the Rosetta Stone software offers some more exotic languages such as Chinese, Arabic or Swahili and much more. For foreign students, the online language portals offer the opportunity to improve their German. [www.dhbw-stuttgart.de/studiumgenerale](http://www.dhbw-stuttgart.de/studiumgenerale)



### COLLEGIATE SPORTS

ROTEBUEHLSTRASSE 131 / 3rd FLOOR / ROOM 3.14 /  
70197 STUTTGART

Students who wish to be active in sports will find a wide range of courses here.

email: [hochschulsport@dhbw-stuttgart.de](mailto:hochschulsport@dhbw-stuttgart.de)  
[www.dhbw-stuttgart.de/hochschulsport](http://www.dhbw-stuttgart.de/hochschulsport)

### CHORMÄLEON

Chormäleon is the official choir of DHBW Stuttgart – a community of those who love to sing: students, alumni, lecturers and staff of the university. The choir rehearsals take place once a week.

[www.dhbw-stuttgart.de/chor](http://www.dhbw-stuttgart.de/chor)

### DHBW ENGINEERING STUTTGART E. V.

For all motor sports enthusiasts DHBW Engineering Stuttgart e. V. provides the opportunity to construct one's own race car together with other students in the context of the "Formula Student" and to compete against teams from around the world. The team is pleased to welcome new members at any time!

[www.dhbw-engineering.de](http://www.dhbw-engineering.de)

### STUDENT UNION

DHBW Stuttgart offers students numerous opportunities to work actively for their interests. Student representatives are part of the institutions of the university, the University Council and the Academic Senate and can exert influence over the events at the university. The Student Union welcomes your engagement.

email: [stuv@dhbw-stuttgart.de](mailto:stuv@dhbw-stuttgart.de)  
[www.stuv-stuttgart.de](http://www.stuv-stuttgart.de)

### DHBW STUTTGART ALUMNI AND FRIENDS ASSOCIATION

HERDWEG 18 / 70174 STUTTGART

Thorsten Ottmüller / phone: 0711/1849-515

email: [kommunity@dhbw-stuttgart.de](mailto:kommunity@dhbw-stuttgart.de)

[www.dhbw-kommunity.de](http://www.dhbw-kommunity.de)

The DHBW Stuttgart Alumni and Friends Association (Alumni-Portal) of DHBW Stuttgart has opened its website in June 2008. All members can use the KOMMUNITY benefits of the exclusive on-line platform in a password-protected area. As DHBW Stuttgart does not have a real campus, we want to offer a "virtual campus". The DHBW Stuttgart Alumni and Friends Association is the location and time-independent communication platform for students, graduates, professors, lecturers and company representatives for all topics related to DHBW Stuttgart. Get involved and get online!

## EVERYDAY LIFE



## TELEPHONE

**Landline phone:** In case you would like to have a fixed telephone line at home you can apply for it at different shops, such as Telekom, Saturn, O2, Vodafone, e-plus or Arcor. If you live in a student dormitory please ask the house keeper how to get a phone line.

**Call-by-call numbers:** You will find the low-priced Call-by-Call prefixes for calling within Germany or abroad at the websites [www.billiger-telefonieren.de](http://www.billiger-telefonieren.de) / [www.verivox.de](http://www.verivox.de)

## SUMMER TIME

In Germany we have the Central European Time (CET). However, in the summer time clocks are switched to summertime in order to save daylight. It means that the clocks are moved one hour forward on the last weekend of March (CET+1). The summertime ends on the last weekend of October. The clocks are then turned one hour back.

## INTERNATIONAL STUDENT IDENTITY CARD (ISIC)

With the international student identity card (ISIC) you can receive discounts in Germany and abroad. Please find more information on the internet: [www.isic.org](http://www.isic.org)

## PUBLIC HOLIDAYS

In the state of Baden-Wuerttemberg we have, besides Bavaria, the most public holidays in Germany. On these days there are no lectures at DHBW Stuttgart and shops, banks and other public sector institutions stay closed.

### Winter semester

3 <sup>rd</sup> October	German Unification Day
1 <sup>st</sup> November	All Saints' Day
24 <sup>th</sup> December	Christmas Eve (Shops close earlier)
25 <sup>th</sup> /26 <sup>th</sup> December	Christmas
31 <sup>st</sup> December	New Year's Eve (Shops close earlier)
1 <sup>st</sup> January	New Year's Day
6 <sup>th</sup> January	Epiphany

### Summer semester

Good Friday\*  
Easter\*  
1<sup>st</sup> May Labour Day  
Ascension Day\*  
Pentecost / Whitsun\*  
Corpus Christi\*

\*dates vary every year

## CAR AND DRIVING LICENCE

If you would like to rent a car you can do it at any car rental company. Addresses and telephone numbers can be found in a telephone book [www.telefonbuch.de](http://www.telefonbuch.de) or in the yellow pages [www.gelbeseiten.de](http://www.gelbeseiten.de) under the keyword "Autovermietungen". Well known car rental companies are for example Avis, Europcar, Hertz or Sixt. Deutsche Bahn also offers a Car-Sharing service. Please inform yourself online: [www.flinkster.de](http://www.flinkster.de)

In order to drive in Germany you need an international driving licence, an EU driving licence or a translation of your driving licence from your home country. You can have your driving licence translated at the German Automobile Association. ADAC Stuttgart / Am Neckartor 2 / phone: 0711/ 2 80 00.

Since 1 March 2008 Stuttgart is a designated "green" or low emission zone. Any vehicle driving through a low emission zone requires an appropriate environmental badge (Umwelt-Plakette). Find more information online: [www.umwelt-plakette.de](http://www.umwelt-plakette.de)

## TRAVELLING BY TRAIN

For the information on special offers and ticket prices or to purchase a train ticket please visit the internet or one of the DB ticket centres (e.g. at the main train station Hauptbahnhof). Please pay attention to the fact that the rail prices are often lower when you buy tickets online or at the ticket machine instead at the ticket counter because the service charge won't apply.

[www.bahn.de](http://www.bahn.de)

## TRAVELLING BY BUS

For the information on special offers and ticket prices please visit the internet pages: [www.deinbus.de](http://www.deinbus.de) / [www.meinfernbus.de](http://www.meinfernbus.de) / [www.flixbus.de](http://www.flixbus.de) / [www.busliniensuche.de](http://www.busliniensuche.de)

## CALL A BIKE | REGIORAD STUTTGART

Red or blue bicycles with a red DB or blue Polygo sign on it are everywhere to be found in the city. Riding or renting for the first 30 minutes is free of charge. You can find more information here: [www.callabike-interaktiv.de](http://www.callabike-interaktiv.de)  
[www.regioradstuttgart.de](http://www.regioradstuttgart.de)





## SHOPPING

In general, stores in Germany are open from Monday to Friday between 8 a.m. (alternatively 10 a.m.) and 8 p.m. and on Saturdays between 8 a.m. (alternatively 10 a.m.) and 6 p.m. A lot of bigger department stores and grocery shops in the inner city and at the bustling places (in Stuttgart for example around the central station) are partly open till 10 p.m. On public holidays the shops are closed in Germany. Outside the business hours you can only find the petrol stations open 24/7. There you can buy a small selection of groceries which are a bit more expensive than usual.

piano classes  
[www.piano-fischer.de](http://www.piano-fischer.de)

second hand  
bicycle market  
[www.rsv-vaihingen.de](http://www.rsv-vaihingen.de)



### LEGAL COUNSELLING

Who wishes a legal counsel can receive it free of charge from a professional at the Studierendenwerk Stuttgart:

<http://studierendenwerk-stuttgart.de/rechtsberatung>

### SOCIAL COUNSELLING

In case you have queries or troubles with your studies the social counselling at the Studierendenwerk Stuttgart offers you a free of charge and confidential appointment.

<http://studierendenwerk-stuttgart.de/rechtsberatung>

### PSYCHOLOGICAL COUNSELLING

Who needs a psychological consulting can receive it from a professional at the Studierendenwerk Stuttgart. The appointments are free of charge and confidential.

<http://studierendenwerk-stuttgart.de/psychotherapeutische-beratung>

### MEDICAL CARE

Doctors, dentists and hospitals are listed online at:

[www.telefonbuch.de](http://www.telefonbuch.de) / [www.gelbeseiten.de](http://www.gelbeseiten.de) / [www.stuttgart.de](http://www.stuttgart.de)

The legal health insurance companies pay for medical treatment if you have an insurance card or the European Health Insurance Card. Those of you who are insured at a private insurance company will need to pay for the treatment yourself and submit the invoice to your insurance company.

### INFORMATION FOR WHEELCHAIR USERS

#### DHBW STUTTGART STUDY CENTRES

There is a good access for wheelchair users in the buildings at Rotebuehlplatz 41, Paulinenstrasse 50, Rotebuehlstrasse 131 and Herdweg 23. In the buildings in Herdweg 23, Rotebuehlplatz 41 and Rotebuehlstrasse 131 there is a handicapped-accessible toilet. In addition, in the buildings in Herdweg 23, Rotebuehlplatz 41, Paulinenstrasse 50 and Rotebuehlstrasse 131 there is an elevator and in the buildings in Kronenstrasse 53 A + B an elevator equipped with a Braille for the visually impaired.

#### LIBRARY

With the new library administration software DHBW students will have easy access to other libraries (e.g. the library of the University of Stuttgart). The rooms at the DHBW library are not handicapped accessible (circular stairs in the basement).

#### INTERNATIONAL OFFICE

The rooms of the building at the Paulinenstrasse 50 are handicapped-accessible.

### ACCOMMODATION

There are handicapped-accessible rooms in the student dormitories. Please note that reservations have to be made in advance.

### PUBLIC TRANSPORTATION

Most U-Bahn stations are handicapped-accessible. Be careful on entering the train as there usually is a gap of approximately 10 cm between the platform and the door. The same applies for the difference in the height. Please note that poles in the entrance area limit the space for wheelchairs. Most buses in the city centre can be lowered to street level and are, therefore, reachable for wheelchairs. Underground stations in the city centre can be reached by elevators.



## EXPERIENCE STUTTGART



## PROGRAMME FOR THE LEISURE TIME

In order to encourage the integration of international students at DHBW Stuttgart and to familiarize them with the region, the people and the customs, the International Office provides you with a programme for your leisure time: Day trips to attractive destinations in Baden-Wuerttemberg, factory tours of local companies, festivals and other seasonal highlights.

**Please inform yourself at the International Office about the current agenda!**

## TOURIST INFORMATION

Cultural and tourist information about Stuttgart and the surrounding area (e.g. event calendar, sightseeing, city maps etc.) is available at the Tourist Information "i-Punkt". There you can also buy tickets for almost every event in the region or a nice gift to take home with you.

"i-Punkt" / Koenigstrasse 1 A / phone: 0711/2228 100  
[www.stuttgart-tourist.de](http://www.stuttgart-tourist.de)

### More information

[www.stuttgart.de](http://www.stuttgart.de)  
[www.lift-online.de](http://www.lift-online.de)  
[www.prinz.de](http://www.prinz.de)  
[www.forum-der-kulturen.de](http://www.forum-der-kulturen.de)  
[www.stuttgarter-zeitung.de](http://www.stuttgarter-zeitung.de)  
[www.stuttgarter-nachrichten.de](http://www.stuttgarter-nachrichten.de)

## CULTURE CONNECTION

**Culture Connection** is DHBW Stuttgart's students' association dedicated to students with a high interest in more internationality during their studies. Cooperating with the International Office of DHBW Stuttgart, the club helps to integrate exchange students in our community and the German Culture. The club was founded out of a students' initiative in 2012. Since then the club has been improving its skills continuously to guarantee the guests a pleasant and memorable stay.

email: [cultureconnection@lehre.dhbw-stuttgart.de](mailto:cultureconnection@lehre.dhbw-stuttgart.de)  
[www.dhbw-stuttgart.de/culture-connection](http://www.dhbw-stuttgart.de/culture-connection)  
[www.facebook.com/cultureconnection.dhbwstuttgart](https://www.facebook.com/cultureconnection.dhbwstuttgart)



## EVENING CLASSES AND LANGUAGE SCHOOLS

### **VHS STUTTGART**

Fritz-Elsas-Strasse 46/48  
phone: 0711/1873-800  
email: [info@vhs-stuttgart.de](mailto:info@vhs-stuttgart.de)  
[www.vhs-stuttgart.de](http://www.vhs-stuttgart.de)

### **DEUTSCH-AMERIKANISCHES ZENTRUM (DAZ)**

Charlottenplatz 17 / phone: 0711/22818-0  
email: [info@daz.org](mailto:info@daz.org)  
[www.daz.org](http://www.daz.org)

### **INSTITUT FRANÇAIS STUTTGART**

Schlossstrasse 51 / phone: 0711/23925-0  
email: [info.stuttgart@institutfrancais.de](mailto:info.stuttgart@institutfrancais.de)  
[www.institutfrancais.de](http://www.institutfrancais.de)

### **TRICOS LANGUAGE SCHOOL**

Fritz-Elsas-Strasse 60  
phone: 0711/9457-1739  
email: [info@tricos-gbr.de](mailto:info@tricos-gbr.de)  
[www.tricos-gbr.de](http://www.tricos-gbr.de)

### **ANGLO-GERMAN INSTITUTE**

Friedrichstrasse 35 / phone: 0711/6018-7650  
email: [info@anglo-german.com](mailto:info@anglo-german.com)  
[www.anglo-german.com](http://www.anglo-german.com)

### **SPRACHENZENTRUM UNIVERSITÄT STUTTGART**

Breitscheidstrasse 2 / 70174 Stuttgart  
phone: 0711/685-88055  
email: [info@sz.uni-stuttgart.de](mailto:info@sz.uni-stuttgart.de)  
[www.sz.uni-stuttgart.de](http://www.sz.uni-stuttgart.de)

### **SPRACHENZENTRUM HOCHSCHULE FÜR TECHNIK STUTTGART**

Schellingstrasse 24 / 70174 Stuttgart  
phone: 0711/8926 2659  
email: [fremdsprachen@hft-stuttgart.de](mailto:fremdsprachen@hft-stuttgart.de)  
[www.hft-stuttgart.de](http://www.hft-stuttgart.de)



## MUSEUMS / GALLERIES

### LANDESMUSEUM WÜRTEMBERG

Over several hundreds of years the old palace served as the principal residence of the Wuerttemberg dukes and earls. Today it houses the Wuerttemberg State Museum with the state's history from the Stone Age to the present, as well as exhibitions on glass, crafts, coins, etc. covering the pan-European region.

[www.landmuseum-stuttgart.de](http://www.landmuseum-stuttgart.de)

### STAATSGALERIE STUTTART

The classical Old State Gallery (opened 1843) and the New State Gallery (opened 1984) with their unconventional, initially controversial building house collections of old German paintings, Italian paintings, Dutch paintings, Art from 1800 to 1900, works of the 20th century as well as an extensive "graphic collection".

[www.staatsgalerie.de](http://www.staatsgalerie.de)

### KUNSTMUSEUM STUTTART

The Kunstmuseum Stuttgart opened in 2005 in the pedestrian zone Koenigstrasse. The unusual glass cube architecture and the extensive collection (including works by the artist Otto Dix) attract many visitors. [www.kunstmuseum-stuttgart.de](http://www.kunstmuseum-stuttgart.de)

### WEISSENHOF-SIEDLUNG

The Weißenhof-Siedlung in the north of Stuttgart is a rare example of 1920s modern architecture. Here you can visit buildings designed by famous architects such as Ludwig Mies van der Rohe, Le Corbusier or Walter Gropius. [www.weissenhofsiedlung.de](http://www.weissenhofsiedlung.de)



### **HAUS DER GESCHICHTE BADEN-WÜRTTEMBERG**

At the Kulturmeile, located in the House of History of the state of Baden-Wuerttemberg, the visitors find interesting historical topics around the state of Baden-Wuerttemberg: the ABC-Wuerttemberg, chronology of the country's history, a theme park to current problems in their historical context. [www.hdgbw.de](http://www.hdgbw.de)

### **STAATLICHES MUSEUM FÜR NATURKUNDE STUTTGART**

Located in Stuttgart's Rosenstein Park, the Museum Schloss Rosenstein is dedicated to the subject of the natural sciences. The Museum am Löwentor is dedicated to the field of paleontology and geology. [www.naturkundemuseum-bw.de](http://www.naturkundemuseum-bw.de)

### **LINDEN-MUSEUM**

#### **STAATLICHES MUSEUM FÜR VÖLKERKUNDE**

The Linden-Museum is one of the greatest ethnological museums in Europe. In addition to the permanent exhibitions in the departments of Africa, South and East Asia, Oceania, North and South America there are many interesting exhibitions, theme events, lectures and festivals such as the International Market of Nations. [www.lindenmuseum.de](http://www.lindenmuseum.de)

### **MERCEDES-BENZ MUSEUM**

On the trail of the Mercedes-Benz Museum, opened in May 2006, visitors can experience a journey through the 120 years of automotive history on 17,000 qm and a total of eight floors, which weave their way in the form of a double helix around the atrium. [www.mercedes-benz-classic.com/museum](http://www.mercedes-benz-classic.com/museum)

### **PORSCHE MUSEUM**

The new Porsche Museum was opened in 2009. 80 exhibits can be admired by the visitors on around 5,600 qm of exhibition space in a modern building. The exhibition vehicles change frequently and are shown in the museum's collection of approximately 450 exhibits. [www.porsche.com/museum](http://www.porsche.com/museum)

## OPERA / BALLET / THEATRE / MUSICALS

### OPERNHAUS

World class opera and ballet. You can buy student tickets one hour before the beginning of the performance at the box office for around EUR 10.00 or online in advance for certain seats at low prices. [www.staatstheater-stuttgart.de](http://www.staatstheater-stuttgart.de)

### SCHAUSPIELHAUS

Remaining tickets are sold to students one hour before the beginning of the performance for around EUR 10.00 or online in advance for certain seats at low prices. [www.staatstheater-stuttgart.de](http://www.staatstheater-stuttgart.de)

### THEATERHAUS

Comprehensive cultural offers from theatre to cabaret and rock concerts. [www.theaterhaus.com](http://www.theaterhaus.com)

### ROSENAU

Cabaret, literature readings and gastronomy in a very enticing ambience. [www.rosenau-stuttgart.de](http://www.rosenau-stuttgart.de)

### SI-ZENTRUM

Musical performances. [www.si-centrum.de](http://www.si-centrum.de) / [www.musicals.de](http://www.musicals.de)

### FRIEDRICHSBAU-VARIÉTÉ

A cabaret with a changing programme. [www.friedrichsbau.de](http://www.friedrichsbau.de)



## CINEMA, CLUBS AND BARS

You can find the cinema programme at the film theaters and online: [www.innenstadt-kinos.de](http://www.innenstadt-kinos.de) / [www.ufastuttgart.de](http://www.ufastuttgart.de) / [www.cinemaxx.de](http://www.cinemaxx.de)

Movies in their original language or with German / English subtitles are marked in the programme with OFmU or OVmU. They are often shown at the Corso cinema in Stuttgart Vaihingen, or in the Arthaus cinemas or in some local cinemas in some part of the town: [www.corso-kino.de](http://www.corso-kino.de) / [www.arthaus-kino.de](http://www.arthaus-kino.de)

English films and lectures are also provided by the James F. Byrnes Institute on Charlottenplatz [www.daz.org](http://www.daz.org)

In the summer there are many open-air cinemas in Stuttgart and in the region.

Stuttgart offers a lot of opportunities to go out. The Theodor-Heuss-Strasse is very popular with young people due to the high density of clubs and bars. The magazines Lift and PRINZ give you an overall insight into the best locations for meeting with friends: [www.lift-online.de](http://www.lift-online.de) / [www.prinz.de](http://www.prinz.de) / [www.stuttgartgehtaus.de](http://www.stuttgartgehtaus.de)





## LANDMARKS, GARDENS AND WALKING TOURS

Like a green band green spaces and recreation parks loop through Stuttgart:

### **SCHLOSSGARTEN**

with a Biergarten

### **ROSENSTEINPARK**

with the Museum of Natural History and Rosenstein Palace

### **HÖHENPARK KILLESBERG**

with a viewing tower, a little train and a nostalgic merry-go-round

### **TV-TOWER**

The TV-tower is the town's landmark. With its 217 meters the Stuttgart TV-tower was the first one in the world and was therefore the prototype for future TV-towers.

[www.fernsehturmstuttgart.com](http://www.fernsehturmstuttgart.com)

### **WILHELMA**

Wilhelma is the only zoological botanical garden in Europe and with its combination of plants, animals and historic buildings unique worldwide. [www.wilhelma.de](http://www.wilhelma.de)

### **WEISSENHOF-SIEDLUNG**

The Weißenhof-Siedlung in the north of Stuttgart is a rare example of 1920s modern architecture. Here you can visit buildings designed by famous architects such as Ludwig Mies van der Rohe, Le Corbusier or Walter Gropius. [www.weissenhofsiedlung.de](http://www.weissenhofsiedlung.de)



## STADIUMS AND SPORTS HALLS / SWIMMING POOLS AND MINERAL WATER SPRINGS

**Mercedes-Benz-Arena** [www.mercedes-benz-arena.de](http://www.mercedes-benz-arena.de)  
Here the first league football matches take place  
**VfB-tickets (soccer)** <http://tickets.vfb.de/tickets.php>

**Hanns-Martin-Schleyer-Halle / Porsche Arena**  
[www.schleyerhalle.de](http://www.schleyerhalle.de)  
Besides sporting events they also host concerts

**Tennisclub Weissenhof e.V.**  
[www.tennis-weissenhof.de](http://www.tennis-weissenhof.de)  
At the beginning of July the world-class clay court tennis match takes place (Mercedes Cup)

Stuttgart has the biggest mineral water sources in western Europe. Three mineral water spas – Leuze, Bad Berg and Mineralbad Cannstatt – are easy to reach by public transportation. The water is especially healthy, although the entrance fee is a bit more expensive.

The Schwaben Quellen is a wellness paradise, an exotic world of wellness journey through 18 countries and cultures: a variety of different sauna cultures with daily more than 30 adventure-infusion ceremonies, refreshing swimming lagoon, gorgeous relaxation areas, hot tubs, steam baths, showers and much more – in one of the finest day spas in Europe.  
[www.stuttgart.de/baeder](http://www.stuttgart.de/baeder)





### **AUTUMN** CANNSTATTER VOLKSFEST

It is one of the biggest folk beer festivals in the world. Every autumn merry-go-rounds, amusement kiosks and rustic beer tents attract visitors to the "Wasen". [www.wasen.de](http://www.wasen.de)

### **STUTTGARTER WEINDORF**

The Wine Village takes place at the end of August. Every year the visitors enjoy regional wine and typical Swabian food at the rustic stands around the Market Square, Schiller Square and on the Kirchstrasse. [www.stuttgarter-weindorf.de](http://www.stuttgarter-weindorf.de)

### **FLEA MARKET AT THE KARLSPLATZ**

There is a so called "small" flea market every Saturday between 8 a.m. and 4 p.m. at the Karlsplatz behind the Old Palace. The big flea market in the city centre takes place twice every year, in the spring and in the autumn. [www.maerkte-stuttgart.de](http://www.maerkte-stuttgart.de)

### **THE STUTTART NIGHT**

The Stuttgart-Night takes place every year in October. This is a bus tour around the city and it takes the participants to different places where music events take place, theater and parties. This is a unique chance to experience Stuttgart's cultural life. [www.stuttgartnacht.de](http://www.stuttgartnacht.de)



## WINTER

**STUTTGART'S CHRISTMAS MARKET**

The Christmas market in Stuttgart can look back on a 300 year old tradition and it is one the biggest Christmas Markets in Europe. There you can warm up while drinking a "Glühwein", a hot spiced wine, and from kitsch to arts and crafts the visitors can buy anything connected to Christmas at the wonderfully decorated stalls. [www.stuttgarter-weihnachtsmarkt.de](http://www.stuttgarter-weihnachtsmarkt.de)

**FASCHING / CARNIVAL**

Carnival – the traditional way to expel the winter – is celebrated throughout Germany with costume parades and festivals in February. It is absolutely recommendable to see one of the real traditional "Fasnet" in a swabian town like Rottenburg or Rottweil. You can go also to Mainz or Köln to celebrate the Carnival.

*Discover the  
Medieval Market  
at Esslingen  
or the Baroque  
Christmas Market  
at Ludwigsburg!*



## SPRING **THE LONG NIGHT OF MUSEUMS**

The Long Night of Museums (Lange Nacht der Museen) takes place in the spring. During the night you can visit different museums and galleries in the city and shuttle buses will bring you to the participating venues. [www.lange-nacht.de](http://www.lange-nacht.de)

## **CANNSTATTER FRÜHLINGSFEST**

It is one of the biggest folk spring festivals in the world. In the spring merry-go-rounds, amusement kiosks and rustic beer tents attract the visitors to the "Wasen". [www.wasen.de](http://www.wasen.de)

## **JAZZOPEN**

JazzOpen is one of the biggest Jazz events in Europe with stars and legends of the jazz scene and neighbouring areas of music. [www.jazzopen.com](http://www.jazzopen.com)



### SUMMER FESTIVAL OF CULTURES

“Sommerfestival der Kulturen“ is organized every year by the association “Forum der Kulturen“ and offers music, performance and international food from all over the world.

[www.forum-der-kulturen.de](http://www.forum-der-kulturen.de)

### FESTIVAL OF LIGHT

In the summertime there is a gorgeous fireworks display at the Killesberg Park. A nice get together with picnic baskets in a marvelous surrounding. [www.lichterfest-stuttgart.de](http://www.lichterfest-stuttgart.de)

### HAMBURG FISH MARKET

Coming from far north, from Hamburg, the Fish Market takes place every year at the Karlsplatz. Delicious treats from the sea can be enjoyed in nice surroundings.

[www.original-hamburger-fischmarkt.de](http://www.original-hamburger-fischmarkt.de)

### AFRICA FESTIVAL

The south quarter of Stuttgart “Stuttgart Süd“ invites Africa enthusiasts to a short summer trip to Africa with delicious African dishes, interesting events and a lot of African arts and crafts.

[www.afrikafestival-stuttgart.de](http://www.afrikafestival-stuttgart.de)

### BALLET IN THE PARK

For ballet enthusiasts the opera house of Stuttgart offers a unique summer event: One day spent in the green garden with such a wonderful cultural event will be remembered for long.

[www.staatstheater-stuttgart.de](http://www.staatstheater-stuttgart.de)

### BOHNENVIERTEL FESTIVAL

The Bohnenviertel Festival takes place in the oldest part of the town. A walking tour through the old alleys, a great offer of music and international food is worth visiting!

[www.das-bohnenviertelfest.de](http://www.das-bohnenviertelfest.de)

### HEUSTEIGVIERTEL FESTIVAL

The residents of the Heusteigviertel, a nice part of the town, celebrate in the summer, too. A small flea market and a lot of creative arts and crafts, and music performed by local artists are offered to the visitors. [www.strassenfest.heusteigviertel.info](http://www.strassenfest.heusteigviertel.info)

### UMSONST & DRAUSSEN

The biggest non-commercial music-politics-culture festival of the alternative scene in Stuttgart. [www.ud-stuttgart.de](http://www.ud-stuttgart.de)

### STUTTGART SUMMER FESTIVAL

The Stuttgart Summer Festival takes place in August at the Schloss Platz and in the city gardens. Almost half a million visitors enjoy the unique ambiance with a great offer of local and international food and live music. [www.sommerfest-stuttgart.de](http://www.sommerfest-stuttgart.de)





## BEAUTIFUL SOUTHERN GERMANY

### ESSLINGEN / LUDWIGSBURG / TÜBINGEN / METZINGEN

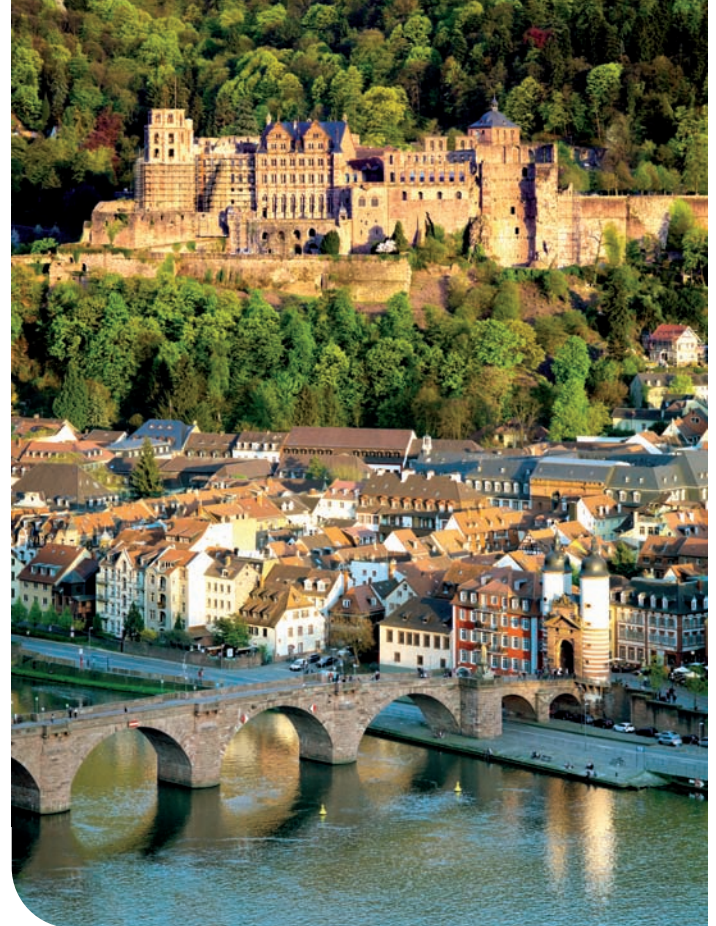
Just a few miles from Stuttgart, in the middle of the vineyards on the banks of the river Neckar there is the beautiful medieval town of Esslingen with its old castle. North of Stuttgart there is the baroque town of Ludwigsburg with its magnificent and imposing palace and gardens. The attractive university town of Tübingen shows its best sides to the visitors in every season. For those who fancy shopping, the Outlet City Metzingen welcomes its visitors.

### HEIDELBERG / HEIDELBERG CASTLE

Heidelberg is a city in Baden-Wuerttemberg which is not far from where the Neckar flows into the Rhine. The landmark of the city is the castle ruins which extend up above the river and the picturesque old town. The Ruprecht-Karls-University is the oldest university in Germany. Scientists and tourists from all over the world visit Heidelberg.

### FREIBURG / BLACK FOREST

Freiburg is the southernmost city in Germany (about 220,000 inhabitants). The old town with the cathedral and the "Bächle", the landmark of the city, annually attracts millions of visitors. The Black Forest is Germany's largest mountain range, usually densely forested, the region extending from the upper Rhine in the south to the north Kraichgau. Lakes Titisee and Schluchsee, the moun-





tain Feldberg (1493 m above sea level) and the Hell Valley are worth seeing. A recreation area with many hiking trails, mountain bike trails in summer and winter, water and winter sports which has maintained its long tradition (traditional costumes, farm houses, parties, etc.).

### **LAKE CONSTANCE / MEERSBURG AND KONSTANZ / ISLAND MAINAU / FRIEDRICHSHAFEN / LINDAU**

The Lake Constance was formed by glaciers during the Ice Age. Today, it shares borders with Austria and Switzerland and is divided into the Upper and the Lower Lake. Both basins are connected by the Seerhein, a section of the Rhine. Do not miss the medieval town of Meersburg with a castle, from which one can enjoy an excellent view over the vast lake. Constance can be reached by ferry from Meersburg. There, visitors can walk around the local port and enjoy the picturesque downtown. The beautiful Island of Mainau is best to visit in the spring and summer time. The Zeppelin Museum is located on the shore of the lake in Friedrichshafen. Visitors can stroll there along the beautiful promenade. In Lindau visitors are fascinated by the narrow, romantic streets of the town and the many small and cozy shops. It is particularly advisable to make a trip by bike (e.g. Langenargen to Lindau).



### **ALLGÄU: FÜSSEN / NEUSCHWANSTEIN CASTLE**

Füssen is a small town in the Eastern Allgäu in the south-western part of Bavaria near the Alps. The city is situated on the Romantic Road and Via Claudia Augusta. The castles Schloss Neuschwanstein and Schloss Hohenschwangau, constructed for the Bavarian King Ludwig II, adorn the region and attract millions of tourists from around the world. Numerous lakes, green sapphire river Lech, fresh herbs of mountain meadows and the wonderfully clean air contribute indisputably to the popularity of this recreation area. Be sure to visit a cheese factory in order to taste the milk and the Allgäu cheese!

### **MUNICH / BMW-WORLD / OKTOBERFEST**

Munich is the capital of the Free State of Bavaria. With about 1.3 million inhabitants it is the largest city in Bavaria and the third largest city in Germany. Munich shows its modern and traditional face at the same time: Long history, admirable architecture, numerous attractions, modern infrastructure, housing and work space are close together. A walk through the Viktualienmarkt, a rest for a coffee at the Odeonsplatz, a carriage ride through the famous English garden or a visit to the Frauenkirche with a wonderful view over the roofs of downtown buildings to the Alps in good weather – everything is worth doing it. The Munich beer, white sausage and Brezn can be tasted in one of the numerous beer gardens or, in the autumn, on the Theresienwiese, a place where the largest annual beer festival, the Oktoberfest, takes place. For automobile enthusiasts the BMW World is worth visiting.



**FRANCE: STRASBOURG / SWITZERLAND: ZURICH / BASEL**

The capital of the French region of Alsace, Strasbourg, invites you to a day visit: Impressive architecture, narrow alleys, places which offer a short recreation within the busy town – a very French flair “around the corner” from Stuttgart! Strasbourg is also host to the headquarters of many European institutions and sees itself as Europe’s capital. Zurich, the largest city in Switzerland, is also the most important economic, scientific and cultural centre of the country. Surrounded by hills, the town is picturesquely situated on Lake Zurich. Basel is the third largest city in Switzerland and is located at the corner of Switzerland / Germany / France.



## IMPORTANT EMERGENCY NUMBERS

**POLICE: 110**

**FIRE DEPARTMENT: 112**

**AMBULANCE: 112**

This numbers can be called free of charge from all phones.

### **LOSS OF YOUR EC-CARD AND YOUR CREDIT CARD**

Please call in order to block your card 24/7:

EC Card hotline: 01805/021021

Visa Card hotline: 0800/8149100

Mastercard hotline: 0800/8191040

### **LOST PROPERTY DEPARTMENT OF STUTTGART**

Hauptstaetter Strasse 66 / 70178 Stuttgart

phone: 0711 216-89494

### **LOST PROPERTY DEPARTMENT**

#### **STUTTGARTER STRASSENBAHNEN (SSB)**

For items lost in the U-Bahn, in the buses or at the stops:

Schoettlestrasse 2 / 70597 Stuttgart / phone: 0711/7885-3333

### **LOST PROPERTY DEPARTMENT**

#### **DEUTSCHE BAHN (DB)**

phone: 0900/199 05 99

### **LOST PROPERTY AT DHBW STUTTGART**

Please give back found items to the house keeper's office at Jaegerstrasse 56. There you can eventually find your missing items, too.

### **LOSS OR THEFT OF YOUR PASSPORT**

In case you lost your passport you should immediately report to the police. You will be given a certification of loss/theft and file a charge against unknown. The foreign registration office (Bürgerbüro) must be immediately informed, too. They will issue a preliminary residence permit (a so-called "Fiktionsbescheinigung"). You must also apply for a new passport at an embassy or consular office of your home country.

Addresses of foreign embassies/consulates in Germany can be found at: [www.auswaertiges-amt.de](http://www.auswaertiges-amt.de)

In case you get into trouble or something happens to you: please contact the staff of the International Office immediately.

Duale Hochschule Baden-Württemberg Stuttgart  
Baden-Wuerttemberg Cooperative State University Stuttgart

Prof. Dr. Joachim Weber, President  
Jaegerstrasse 56, 70174 Stuttgart  
Germany

## DESIGN

Hubert Flaig  
Flaig + Flaig GmbH, Stuttgart

## PRINT

Onlineprinters GmbH, Neustadt a. d. Aisch

## PHOTO CREDITS

Fotolia / Alicia Amatriain und Jason Reilly in *Die Kameliendame* (Choreographie: John Neumeier) / DAS LEUZE Mineralbad, Bäderbetriebe Stuttgart / in.Stuttgart / [www.metzingen.de](http://www.metzingen.de)

All other photos: Duale Hochschule Baden-Württemberg Stuttgart.  
Alle Rechte vorbehalten. Nachdruck und Vervielfältigung auf Papier und elektronischen Speichermedien sowie Einspeisung in Datennetze nur mit Genehmigung des Herausgebers. Alle Angaben wurden mit größter Sorgfalt erarbeitet und zusammengestellt. Für die Richtigkeit und Vollständigkeit des Inhalts sowie für die zwischenzeitliche Änderungen übernimmt die Duale Hochschule Baden-Württemberg Stuttgart keine Gewähr.

© DHBW Stuttgart, August 2018

## International Office

Paulinenstrasse 50  
D-70178 Stuttgart  
Germany

[international@dhbw-stuttgart.de](mailto:international@dhbw-stuttgart.de)

[www.dhbw-stuttgart.de/incomings](http://www.dhbw-stuttgart.de/incomings)  
[www.facebook.com/aaio.dhbwstuttgart](https://www.facebook.com/aaio.dhbwstuttgart)  
[www.twitter.com/DHBWStuttgartIO](https://www.twitter.com/DHBWStuttgartIO)

[www.dhbw-stuttgart.de/incomings](http://www.dhbw-stuttgart.de/incomings)